



# Virginia Healthcare Workforce Briefs

Indicators from the Bureau of Labor Statistics'  
Current Employment Statistics Survey  
**Series 1: State & National Employment**

Series 1, Issue 142

January 2024

## Inside this Brief:

HC&SA Employment	2
HC&SA Employment Growth	2
Total Nonfarm Payroll	3
Total Nonfarm Payroll Growth	3
About the Data	4

*Data in the report are seasonally adjusted. Self-employed persons, including health professionals in private practice, are not included.*

## Highlights

- ◆ Virginia's Health Care & Social Assistance (HC&SA) sector produced 2,900 new jobs in December, a gain that represents a one-month annualized employment growth rate of 7.4%. In 2023, employment in Virginia's HC&SA sector increased by a total of 21,300. This full-year job gain translates into a 4.6% employment growth rate.
- ◆ The national HC&SA sector created 58,900 new jobs in December, which translates into a 3.3% annualized employment growth rate. With this gain, national HC&SA employment increased by a total of 919,900 in 2023, which represents a 12-month growth rate of 4.4%.
- ◆ Virginia's overall economy experienced its first decline in employment in more than one year as the state's total nonfarm payroll employment fell by 11,800 in December. Regardless, Virginia's overall economy still produced 45,100 jobs in 2023, which translates into a 1.1% employment growth rate.
- ◆ The overall national economy created 216,000 new jobs in December, a gain that represents a one-month annualized employment growth rate of 1.7%. Over the past year, national total nonfarm payroll employment has increased by nearly 2.7 million.

## Data in Brief

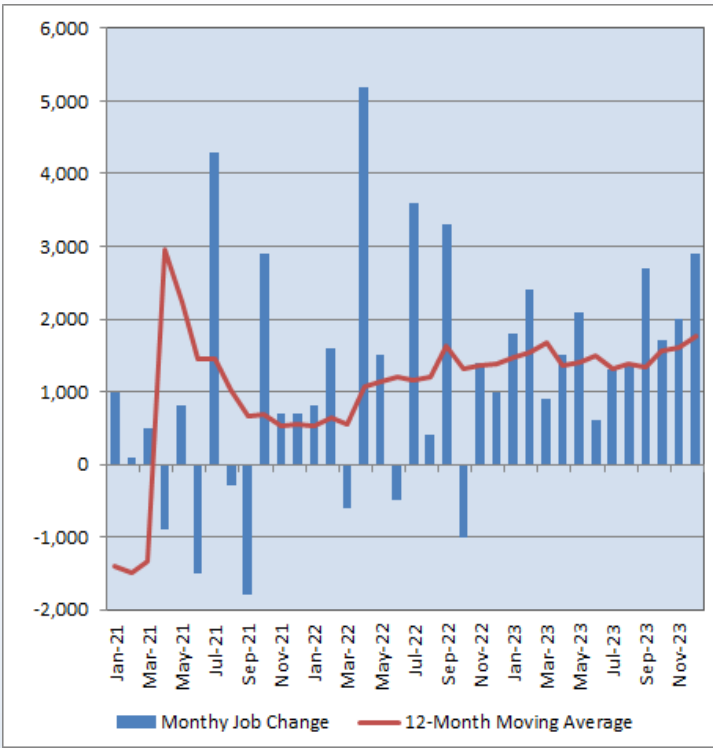
Seasonally Adjusted*	Employment, in Thousands				Growth Rate, Annualized		
	Dec. 2022	Sept. 2023	Nov. 2023	Dec. 2023	12 Month	3 Month	1 Month
<b>Nonfarm, Total</b>							
Virginia	4,111.9	4,164.5	4,168.8	4,157.0	1.1%	-0.7%	-3.3%
National	154,535.0	156,738.0	157,016.0	157,232.0	1.7%	1.3%	1.7%
<b>Health Care &amp; Social Assistance</b>							
Virginia	466.9	481.6	485.3	488.2	4.6%	5.6%	7.4%
National	20,970.2	21,668.1	21,831.2	21,890.1	4.4%	4.2%	3.3%
<b>All Other Nonfarm</b>							
Virginia	3,645.0	3,682.9	3,683.5	3,668.8	0.7%	-1.5%	-4.7%
National	133,564.8	135,069.9	135,184.8	135,341.9	1.3%	0.8%	1.4%

Preliminary estimates are italicized

\* Seasonally adjusted data are adjusted by the Bureau of Labor Statistics to account for weather, holidays and other seasonal changes. Economists use seasonally adjusted data to reveal underlying trends over time. This series uses seasonally adjusted data exclusively. When comparing data in this series to other HWDC series, or publications from other sources, it is important to note whether the data reported have been seasonally adjusted.

## HC&SA Employment

**Figure 1: Monthly Change in Employment in Virginia’s Health Care & Social Assistance Sector, Seasonally Adjusted.**



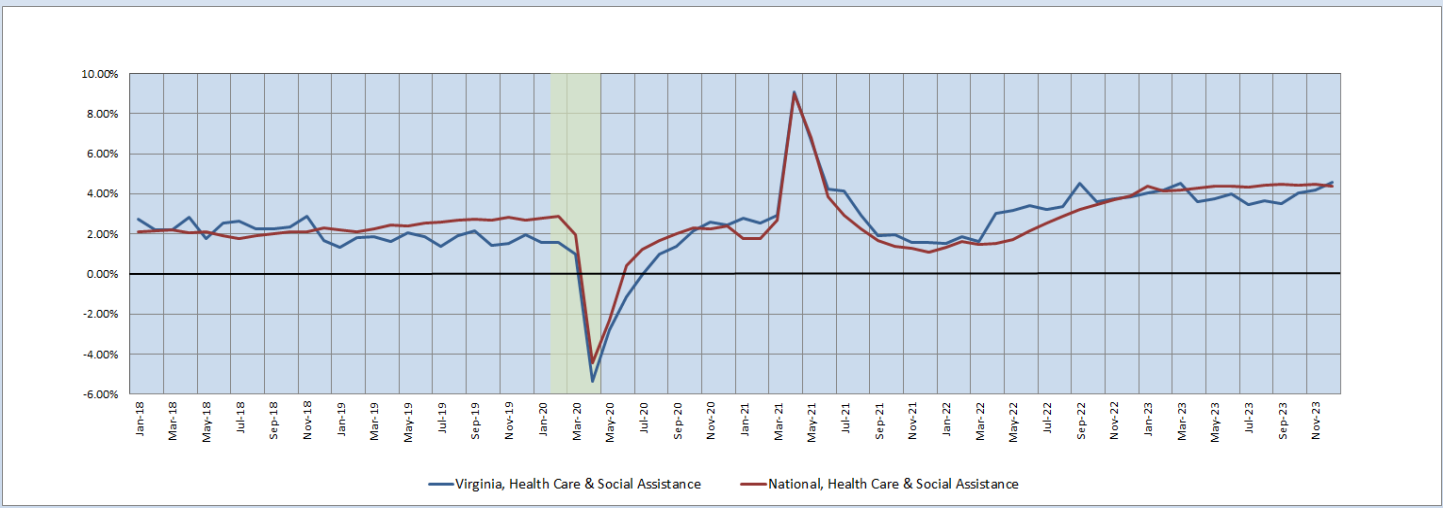
According to the preliminary data released on Tuesday, January 23, 2024, by the U.S. Department of Labor, Bureau of Labor Statistics, Virginia’s Health Care & Social Assistance (HC&SA) sector ended 2023 on a particularly strong note thanks to the creation of 2,900 new jobs in December. This increase in Virginia’s HC&SA employment represents an impressive one-month annualized growth rate of 7.4%. In addition, this also represents the largest monthly employment gain in Virginia’s HC&SA sector in all of 2023, a year in which the state’s HC&SA job market enjoyed exceptional employment growth. In 2023, Virginia’s HC&SA sector produced a total of 21,300 jobs across the state, which translates into a 4.6% employment growth rate. This represents the largest full-year job gain in Virginia’s HC&SA sector in the past three decades.

With respect to both short-term and long-term job growth, Virginia’s HC&SA sector has outperformed the overall national average. In December, the national HC&SA sector created 58,900 jobs, which translates into a 3.3% annualized growth rate. In 2023, the national HC&SA sector increased employment by 4.4%.

## Long-Term HC&SA Employment Growth

In December, Virginia’s 12-month HC&SA employment growth rate moving average increased from 4.18% to 4.58%. With this increase, the 12-month employment growth rate moving average of Virginia’s HC&SA sector has now reached its highest value in more than two-and-a-half years. At the same time, it has also overtaken the comparable moving average for the national HC&SA sector as a whole, which fell slightly in December from 4.47% to 4.39%. Although this month’s decline was relatively modest, it was still enough to send the 12-month employment growth rate moving average of the national HC&SA sector to its lowest level since July. Regardless, this moving average has remained above 4% throughout the entirety of 2023. This represents a marked improvement relative to 2022 when this moving average never exceeded 4%.

**Figure 2: 12-Month Moving Average, HC&SA Employment Growth, Seasonally Adjusted**

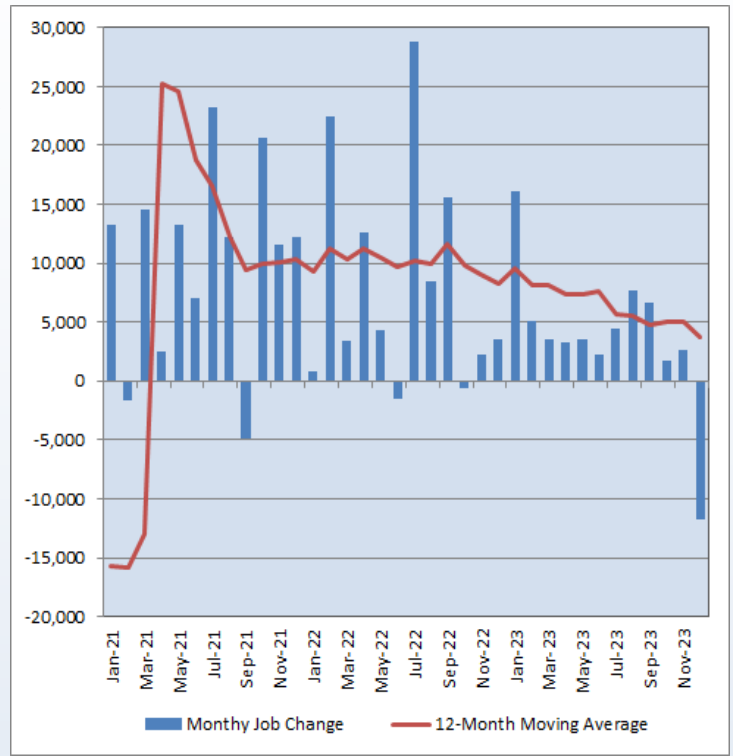


### Total Nonfarm Payroll Employment

While Virginia’s HC&SA sector enjoyed its largest monthly employment gain in 2023 during the month of December, the state’s overall economy experienced its first decline in employment in more than one year. In December, Virginia’s overall economy lost 11,800 jobs across the state. This decline in Virginia’s total nonfarm payroll employment represents a one-month annualized growth rate of  $-3.3\%$ . Furthermore, it also represents the largest monthly decline in the state’s total nonfarm payroll employment in nearly four years. Despite this month’s employment decline, Virginia’s overall economy still created 45,100 jobs in 2023, a gain that translates into a  $1.1\%$  employment growth rate. Virginia’s HC&SA sector was responsible for 47% of this full-year job gain.

The overall national economy enjoyed its largest monthly job gain since September after creating 216,000 new jobs in December. This increase in national total nonfarm payroll employment represents a one-month annualized growth rate of  $1.7\%$ . The overall national economy produced nearly 2.7 million jobs across the country in 2023, which translates into an equivalent  $1.7\%$  growth rate. The national HC&SA sector was responsible for 34% of this growth.

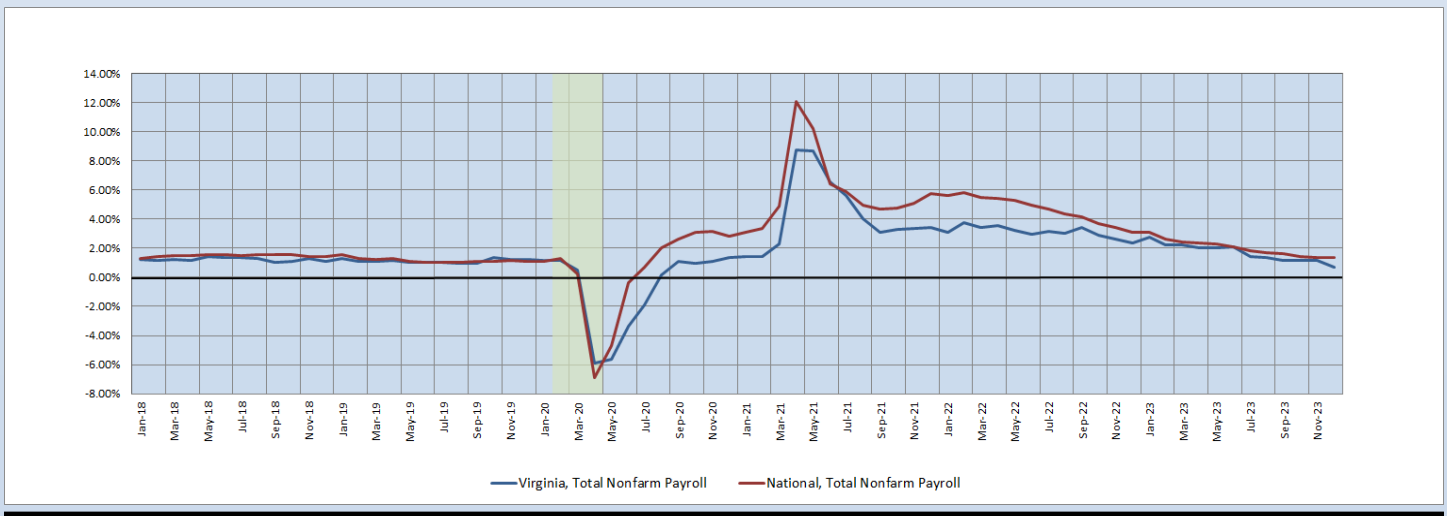
**Figure 3: Monthly Change in Employment in Virginia’s Total Nonfarm Payroll, Seasonally Adjusted**



### Long-Term Total Nonfarm Payroll Employment Growth

In December, the 12-month moving average of Virginia’s total nonfarm payroll employment growth declined by more than 40%, falling from  $1.14\%$  to  $0.67\%$  during the month. With this decline, Virginia’s overall economy saw its 12-month employment growth rate moving average fall below  $1\%$  for the first time in more than three years. Furthermore, this decline expanded the gap between the moving average for Virginia’s overall economy and that of the national economy as a whole. In fact, the 12-month moving average of national total nonfarm payroll employment growth essentially held steady in December with only a slight decline from  $1.34\%$  to  $1.33\%$  during the month. Regardless, this still represents a new year-to-date low for the 12-month employment growth rate moving average of the overall national economy.

**Figure 4: 12-Month Moving Average, Total Nonfarm Payroll Employment Growth, Seasonally Adjusted**



**Healthcare Workforce  
Data Center**

Perimeter Center  
9960 Mayland Drive, Suite 300  
Henrico, VA 23233-1463

Phone: (804) 597-4213  
Fax: (804) 527-4434  
E-mail: [hwdc@dhp.virginia.gov](mailto:hwdc@dhp.virginia.gov)  
Website: [www.dhp.virginia.gov/PublicResources/  
HealthcareWorkforceDataCenter/](http://www.dhp.virginia.gov/PublicResources/HealthcareWorkforceDataCenter/)

*HWDC Staff:*

Yetty Shobo, PhD <i>Director</i>	Barbara Hodgdon, PhD <i>Deputy Director</i>
Rajana Siva, MBA <i>Data Analyst</i>	Christopher Coyle, BA <i>Research Assistant</i>

Follow us on . . .

Tumblr: <http://vahwdc.tumblr.com/>

The Department of Health Professions' Healthcare Workforce Data Center works to improve the data collection and measurement of Virginia's healthcare workforce through regular assessment of workforce supply and demand issues among the 80 professions and 350,000 practitioners licensed in Virginia by the DHP.

The HWDC collects data on Virginia's licensed health professionals through surveys completed during the online license renewal and application process. Survey results and data may be accessed on our website: [www.dhp.virginia.gov/  
PublicResources/HealthcareWorkforceDataCenter/](http://www.dhp.virginia.gov/PublicResources/HealthcareWorkforceDataCenter/).

The HWDC also provides a series of Virginia Healthcare Workforce Briefs based on data collected by the U.S. Department of Labor's Bureau of Labor Statistics and the U.S. Department of Commerce's Bureau of Economic Analysis.

Virginia Healthcare Workforce Briefs:

Series 1: State & National Employment (Monthly)

Series 2: Virginia Regional & Sectoral Employment (Monthly)

Series 3: Income & Compensation (Quarterly)

---

**About the Data**

Data in this report are from the U.S. Department of Labor, Bureau of Labor Statistics' Current Employment Statistics program. The CES program surveys about 143,000 businesses and government agencies monthly. Unless otherwise noted, this series uses seasonally-adjusted data that removes seasonal variations related to weather, holidays, weekends, seasons and other predictable variations. This allows us to better examine underlying trends in the labor market. Data from recent months are preliminary and subject to revision in future releases from the CES. Revisions will be reported in future editions of this series. Unless otherwise noted, the CES data presented in this series:

**Includes:**

- ◆ Data on employed individuals drawing a paycheck (payroll employees).
- ◆ All employees, regardless of role, occupation or hours worked.
- ◆ HC&SA employees in the private sector only.
- ◆ Persons employed by health professionals in private practice.
- ◆ Both government and private sector workers in nonfarm employment data.

**Does not include:**

- ◆ Self-employed workers or volunteers, including health professionals in private practice.
  - ◆ HC&SA employees in the public sector (These are counted as government workers in monthly reports).
  - ◆ Information on hours worked or the quality of employment.
  - ◆ Government workers in HC&SA level data (Government workers, regardless of occupation and role, are classified as public sector employees).
-